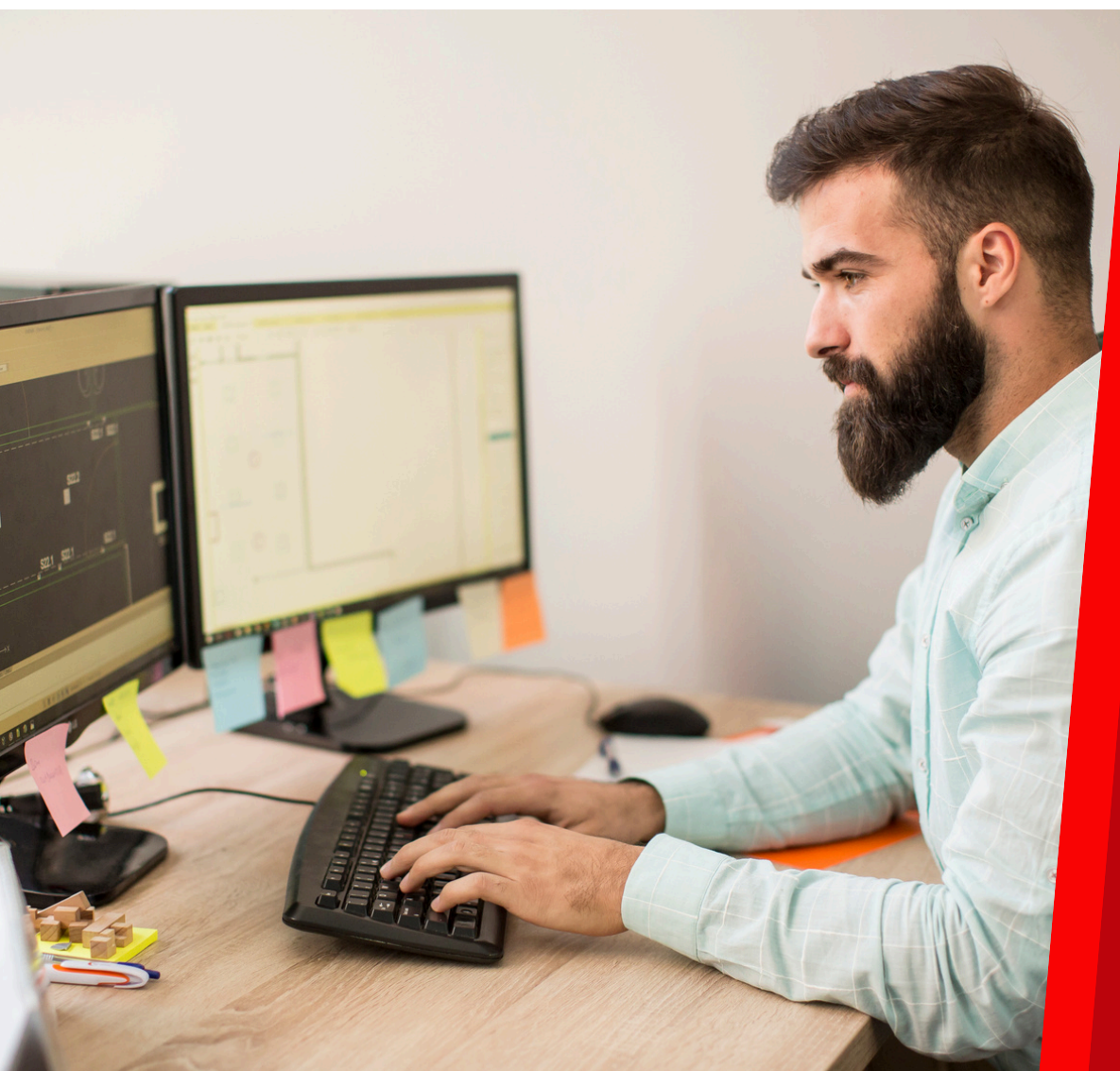




TB AUTOMATED DISPENSARY

Introduction



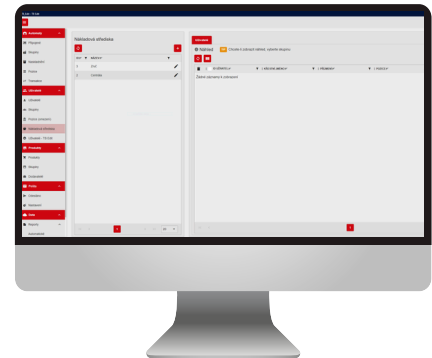
TB AUTOMATED DISPENSARY

Basic information

Automated dispensing of items from the warehouse or from dispensing machines. With the help of a freestanding panel or various types of dispensing machines, it is possible to dispense or reserve consumer goods, or also lend devices, tools, cars, gauges, tools. An online application is available for easy setup.

Warehouse management system TB WMS

- Records of dispensing
- Loans of goods
- Reservation of goods
- Restrictions by job positions and groups
- Management through a web application
- Cloud solution
- Reports
- Dispensing reference numbers
- Orders



Dispensary hardware

- The automated dispensary can be used in combination with a freestanding panel and with all types of machines and extension modules. The dispensary can be gradually expanded.
- Possibility to use several types of dispensing systems in one row, depending on the type of goods.

User interaction with hardware

- Login by password, card or chip using the assigned user role
- Control through the touch screen (withdrawal, loan, return, reservation)
- Display of goods based on widely adjustable restriction according to assigned job position and user group

Combination of the system with a dispensing panel

- Dispensing record panel for automated dispensary
- Delivery, loans and reservations
- Warehouse management system
- Touch display
- The possibility of connecting to other types of dispensing machines and expansion modules

-
- RFID card and chip reader
 - QR barcode reader
 - Label printer for printing delivery requests from your own warehouse



TB AUTOMATED DISPENSARY

Basic information

Combination of the system with dispensing machines

- Several different types of dispensing machines for dispensing a wide range of goods of various sizes
 - RFID card and chip reader for login
 - Control via a 27" flip-out touch screen
 - QR barcode reader for easier selection and inspection
 - Internal monitoring IP camera for dispensing
-
- WiFi / GSM connection
 - Label printer for printing delivery requests from your own warehouse



Online system management

- Permissions for role-based data management (for example, the master can only see and manage user data and restrictions for the automated dispensaries assigned to his location, at the same time he can access transactions only from these dispensaries)
- Permission to display only certain modules within the application
- Authorization to perform only certain actions within the application

Compatibility with different types of machines ("plug and play" connection)



TB AUTOMATED DISPENSARY

Additional Information

Cloud

- Data server in the cloud
- Control the application via devices from anywhere
- Regular update

On-premises

- Data server directly in the machine
- Application control via devices on the internal network

Connection of external warehouses

- The system allows you to add existing goods using external warehouses (these are goods that are located outside the dispensing machine)
- It is therefore possible to extend all records (restrictions, orders, etc.) to the customer's own company goods that are not directly in the machines (for example, own warehouse, shelf, etc.)

Reporting and information emails

- Regular automatic and custom one-off reports
- Complete overview of all dispensing transactions and other data from the automated dispenser
- Informing default users by email in case of incorrect payments
- Notification in the event of an inactive machine
- Notification when the product limit is reached
- Informing when the goods reach the minimum limit

Connection to the internal system

- Import and export files for administrators with the required permission
- Using the same RFID cards or chips from the attendance system
- Option to connect to TB WMS via API - included in the subscription price
- Custom connection to an external system - API, CSV, XML, DB - as needed

Customization for suppliers

- Complete management of dispensaries at different locations of different customers
- Individual customers have separate data
- All with central cloud management
- The master user manages other users and dispensing restrictions from the machines assigned to him
- The supplier manages product data

Customization for the end customer

- From 1 dispensing unit (panel or dispensing machine)
- With the possibility of gradual expansion
- Option of on-premises or cloud solutions

Cost savings

- The main benefit is the reduction in the cost of dispensing consumer goods through the control and limitation of dispensing
- Saving the storekeeper's time, improving the overview of the inventory status

TB AUTOMATED DISPENSARY

TB WMS cloud solution operated by the goods supplier 

Both the supplier and individual customers have access to the TB WMS system

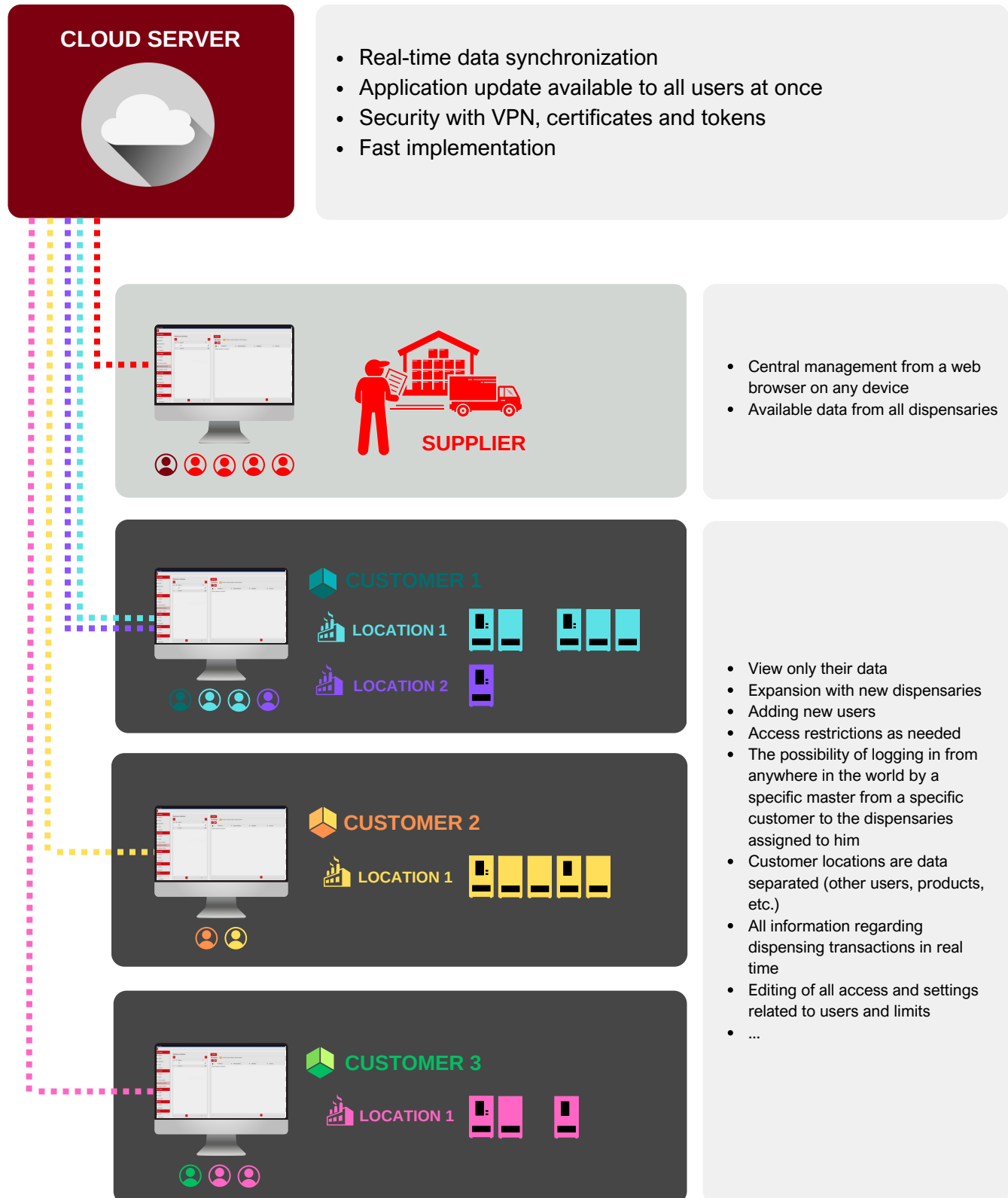
- The supplier manages the data of all customers
 - Customers and their locations
 - Product details and prices
 - Stocking status of individual dispensaries of all customers
 - Web application administrators and their permissions
 - Orders issued and receipts of all dispensaries
 - Automatic reporting for the supplier
- The supplier's customers only manage their dispensaries
 - Data regarding users (accesses to dispensaries, job positions, adding new users)
 - Restrictions of individual products
 - The masters have access to the dispensaries within the customer's selected location
 - Issue reference numbers (e.g. order numbers)
 - Set reporting for location, dispensary
 - Information regarding incorrect issues (videos and photos to selected email addresses of the end customer, i.e. e.g. a specific master has information regarding the dispensaries assigned to him)



TB AUTOMATED DISPENSARY

TB WMS cloud solution operated by the goods supplier 

Management using the TB WMS web application through the cloud

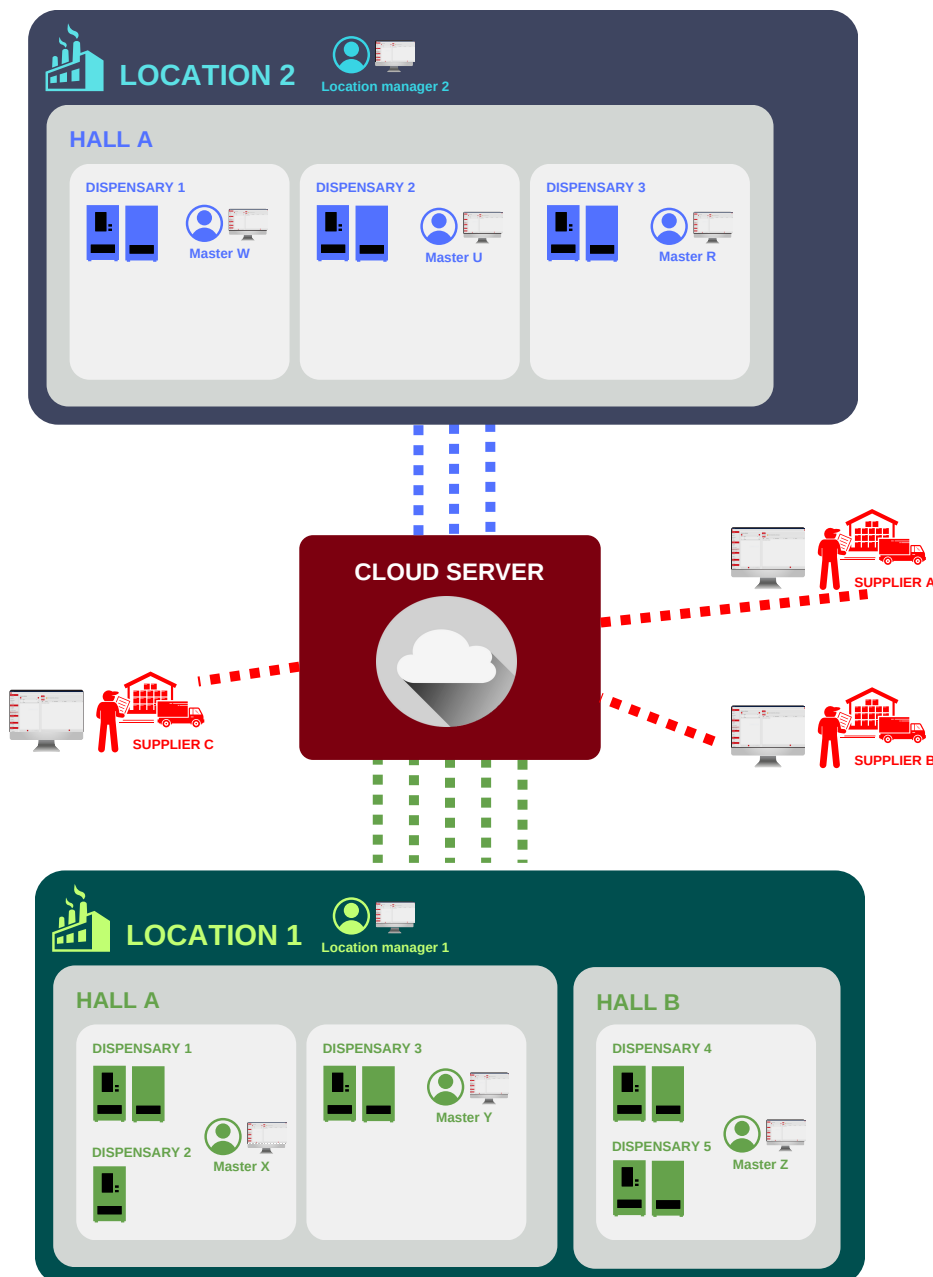


TB AUTOMATED DISPENSARY

TB WMS cloud solution for the end customer 

Advantages of TB WMS cloud variant for end customers

- Data server in the cloud - IT management outsourcing
- Manage data through a web browser from anywhere
- No risk of losing synchronization, as the server is not stored inside the machine. That is, in the event of an outage of one dispensary, the operation of the others is without restrictive conditions
- Secure connection of suppliers of goods - not solving problems with access to the internal network
- Ability to connect multiple locations
- Regular updates of the TB WMS application and all other applications

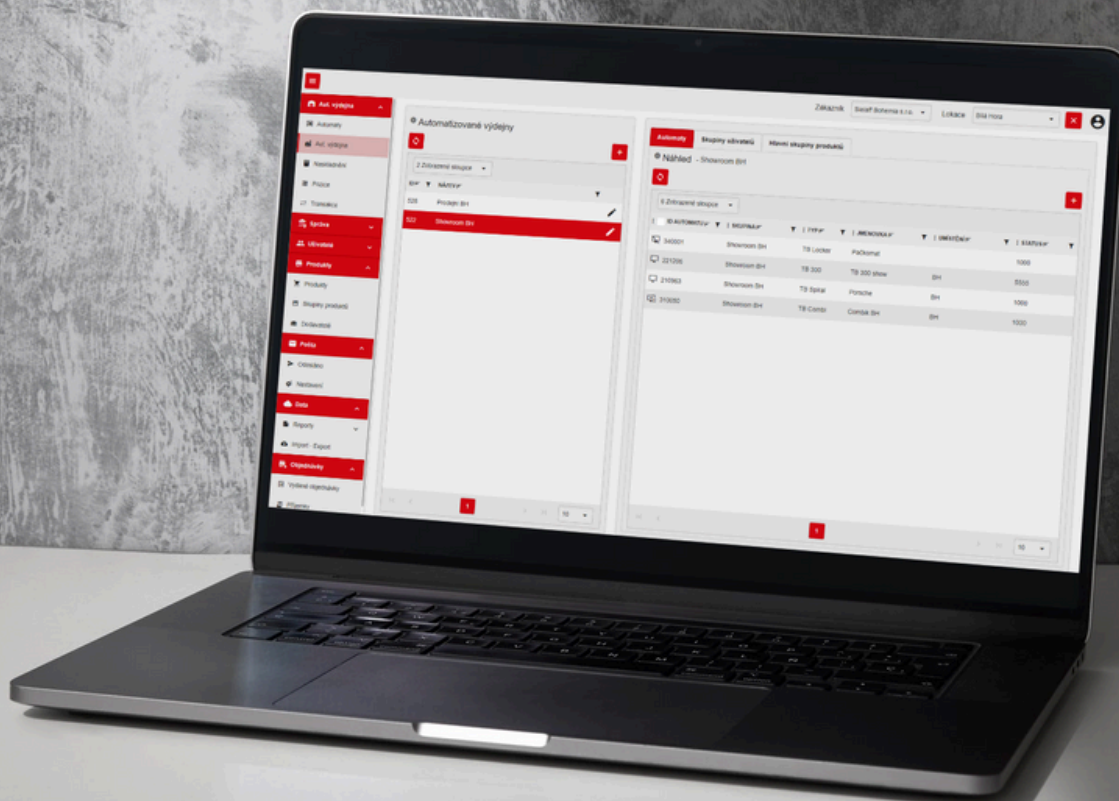


TB AUTOMATED DISPENSARY

TB WMS cloud solution - additional info 

Security and connection

- Microsoft Azure Cloud Environment - Take advantage of a team of more than 3,500 global cybersecurity experts working together to protect business assets and data in Azure.
- Connection using VPN, the machine is connected to the mobile network. The machine is connected to the server via a VPN modem or the customer's network. To increase security, it is possible to connect all accessing devices to a VPN for an additional fee.
- Data communication is secured using the JWT token and SSL encrypted.



TB AUTOMATED DISPENSARY

On-premises TB WMS solution for the end customer

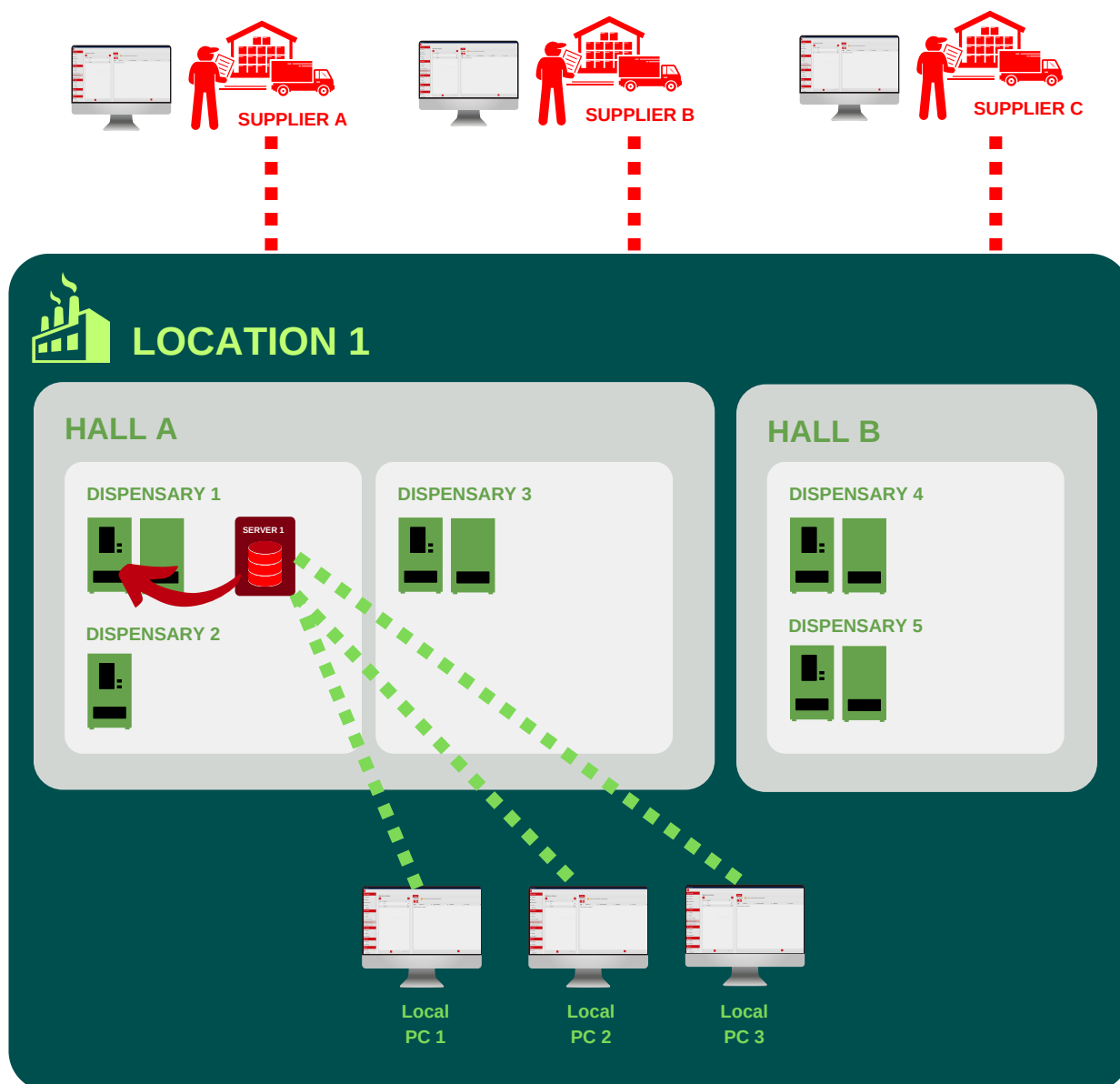


Leaving the server directly in the machine at the customer

- Data server in one selected dispensary
- Access to the application through the internal network

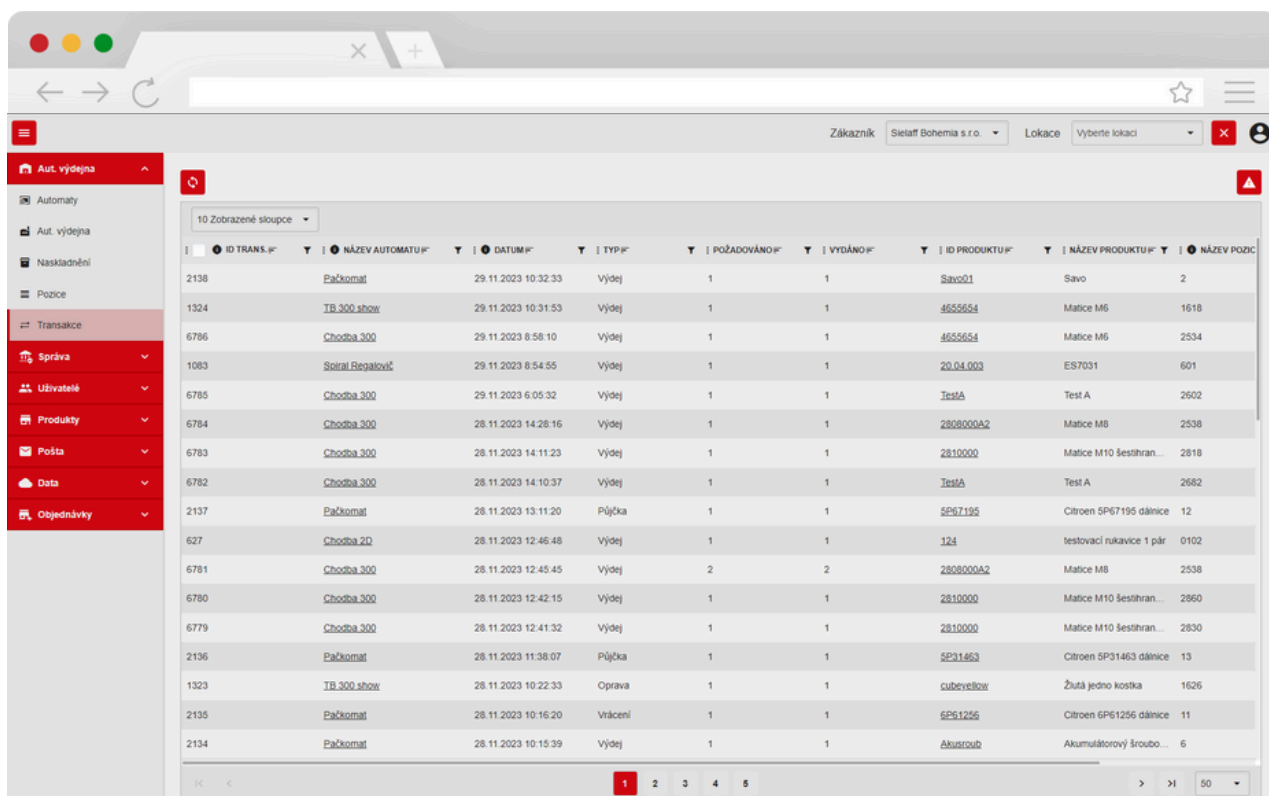
In the case of on-premises solution, the following needs to be taken into account

- Access to the internal network for supplier access to the application
- Risk of hardware failure - data disks in the dispensary with the server
- Limitation to only one location (for example, one manufacturing plant)
- App updates are not supported



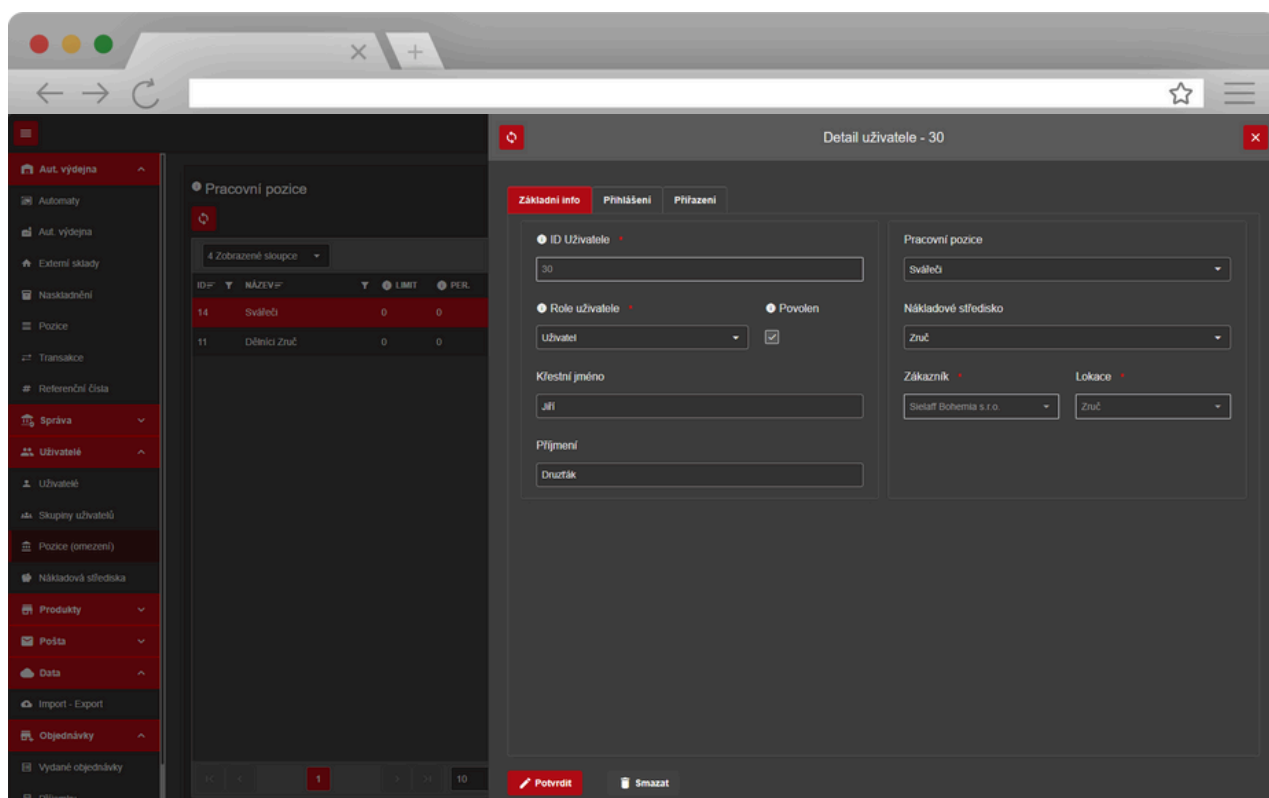
TB AUTOMATED DISPENSARY

TB WMS Preview - Light and Dark Mode



The screenshot displays the TB WMS interface in Light Mode. The left sidebar contains a menu with options: Aut. výdejna, Automaty, Aut. výdejna, Naskladnění, Pozice, Transakce, Správa, Uživatelé, Produkty, Pošta, Data, and Objednávky. The main area shows a table of transactions with columns: ID TRANS. F, NÁZEV AUTOMATU F, DATUM F, TYP F, POŽÁDOVÁNÍ F, VYDÁNÍ F, ID PRODUKTU F, NÁZEV PRODUKTU F, and NÁZEV POZ. The table lists various transactions, including 'Pačkomat', 'TB 300 show', 'Chodba 300', 'Spiral Regalový', and 'Citroen SP67195 dálnice'. The bottom of the table has a pagination bar with page numbers 1 through 5.

ID TRANS. F	NÁZEV AUTOMATU F	DATUM F	TYP F	POŽÁDOVÁNÍ F	VYDÁNÍ F	ID PRODUKTU F	NÁZEV PRODUKTU F	NÁZEV POZ.
2138	Pačkomat	29.11.2023 10:32:33	Výdej	1	1	Savo01	Savo	2
1324	TB 300 show	29.11.2023 10:31:53	Výdej	1	1	4655654	Matice M6	1618
6786	Chodba 300	29.11.2023 8:58:10	Výdej	1	1	4655654	Matice M6	2534
1083	Spiral Regalový	29.11.2023 8:54:55	Výdej	1	1	20.04.003	ES7031	601
6785	Chodba 300	29.11.2023 6:05:32	Výdej	1	1	TestA	Test A	2502
6784	Chodba 300	28.11.2023 14:28:16	Výdej	1	1	2808000A2	Matice M8	2538
6783	Chodba 300	28.11.2023 14:11:23	Výdej	1	1	2810000	Matice M10 šestihran...	2818
6782	Chodba 300	28.11.2023 14:10:37	Výdej	1	1	TestA	Test A	2682
2137	Pačkomat	28.11.2023 13:11:20	Půjčka	1	1	SP67195	Citroen SP67195 dálnice	12
627	Chodba 20	28.11.2023 12:46:48	Výdej	1	1	124	testovací rukavice 1 pár	0102
6781	Chodba 300	28.11.2023 12:45:45	Výdej	2	2	2808000A2	Matice M8	2538
6780	Chodba 300	28.11.2023 12:42:15	Výdej	1	1	2810000	Matice M10 šestihran...	2860
6779	Chodba 300	28.11.2023 12:41:32	Výdej	1	1	2810000	Matice M10 šestihran...	2830
2136	Pačkomat	28.11.2023 11:38:07	Půjčka	1	1	SP31463	Citroen SP31463 dálnice	13
1323	TB 300 show	28.11.2023 10:22:33	Oprava	1	1	cubeyellow	Žlutá jedno kostka	1626
2135	Pačkomat	28.11.2023 10:16:20	Vrácení	1	1	6P61256	Citroen 6P61256 dálnice	11
2134	Pačkomat	28.11.2023 10:15:39	Výdej	1	1	Akuzorou2	Akumulátorový šroubo...	6



The screenshot displays the TB WMS interface in Dark Mode, showing the 'Detail uživatele - 30' form. The left sidebar contains a menu with options: Aut. výdejna, Automaty, Aut. výdejna, Externí sklady, Naskladnění, Pozice, Transakce, Referenční čísla, Správa, Uživatelé, Skupiny uživatelů, Pozice (omezení), Nákladová střediska, Produkty, Pošta, Data, Import - Export, Objednávky, Vydání objednávek, and Příjemky. The main area shows a table of work positions with columns: ID F, NÁZEV F, LIMIT, and PER. The table lists two positions: 'Sváleč' and 'Dělník Zruč'. The right panel contains a form for user details, including fields for ID Uživatele, Role uživatele, Povol, Křestní jméno, Příjmení, Pracovní pozice, Nákladové středisko, Zákazník, and Lokace. The bottom of the form has buttons for 'Potvrdit' and 'Smazat'.

ID F	NÁZEV F	LIMIT	PER.
14	Sváleč	0	0
11	Dělník Zruč	0	0

Detail uživatele - 30

Základní info **Přihlášení** **Přiznání**

ID Uživatele 30

Role uživatele uživatel **Povol** ☒

Křestní jméno Jiří

Příjmení Družík

Pracovní pozice Sváleč

Nákladové středisko Zruč

Zákazník Sietaff Bohemia s.r.o. **Lokace** Zruč

Potvrdit **Smazat**



Sielaff Bohemia s.r.o

Manufacturer of vending machines
28. října 68
301 00 Plzeň
Czech Republic

Telefon: +420 377 562 005
E-mail: centrala@sielaff.cz
Internet: www.sielaff.cz

Compatible with TB - automated dispensary

